



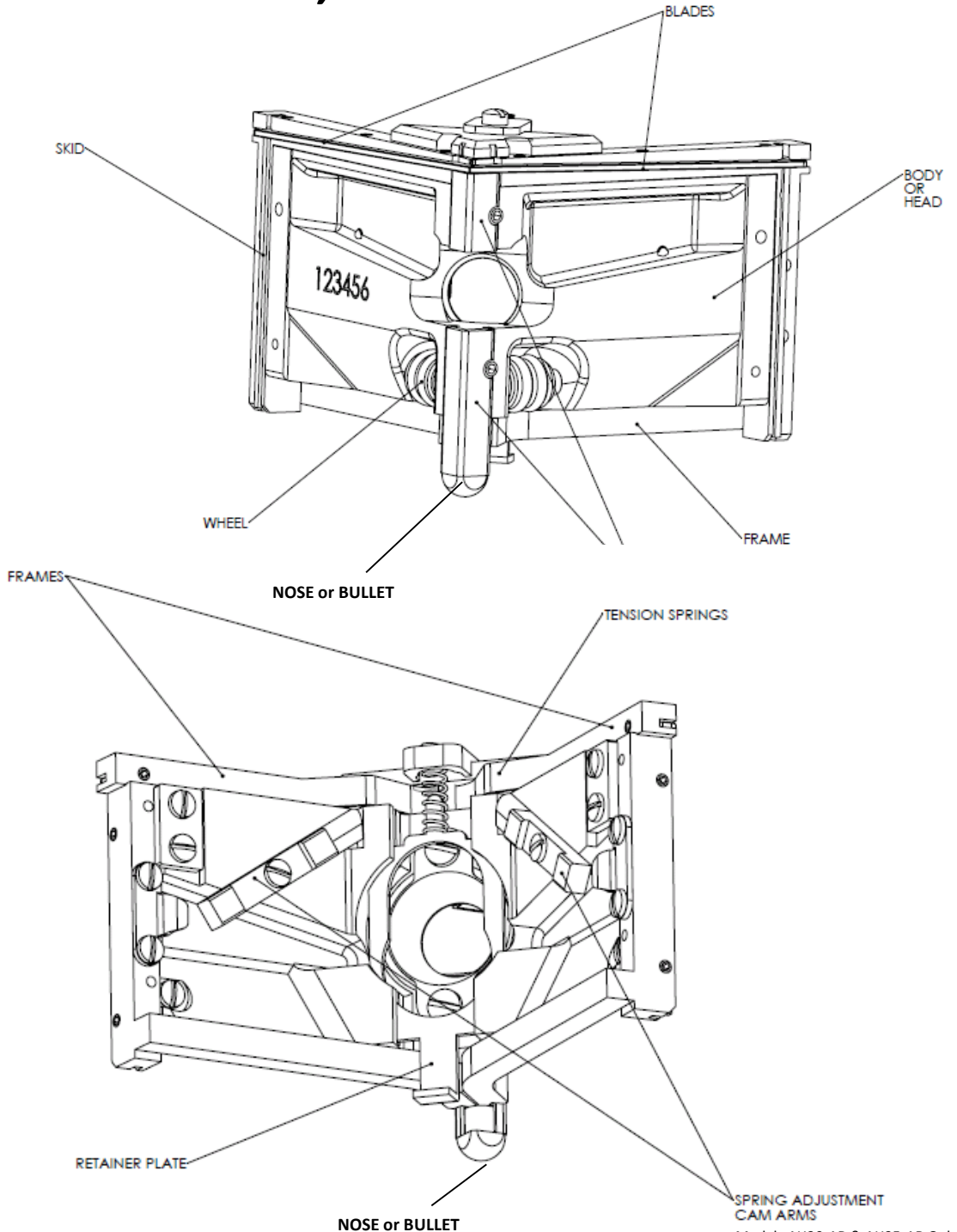
ASGARD

1327 Northbrook Parkway, Suite 400
Suwanee, GA 30024
1-800-426-6256 | 678-892-2323

Angle Heads

Operation and Maintenance Guide

Models: AH25-AD, AH30-AD & AH35-AD



Models AH30-AD & AH35-AD Only

Models: AH25-AD, AH30-AD & AH35-AD

Operation

Asgard angle heads are designed to finish internal corner joints. The spring action compensates for corners that are slightly over or under 90 degrees and the blade design produces smoothly feathered internal corners.

The 2.5" Angle Head (model AH25-AD) is designed to follow the Corner Roller (CR01-AD) and wipe down excess compound left when the tape is embedded into the corner. To use the angle head to wipe down internal corners after the corner roller, first attach the angle head to the CFA-AD adapter, mounted to either the FH-AD or XH-AD handle. Use the corner finisher as a plow, with the nose end leading. Always work from one end of the corner to the other end – vertically or horizontally. Be sure the nose of the angle head is always in the front of the tool based on the direction you are moving along the corner. Detail wall and ceiling corner intersections with a drywall knife.

After the tape coat has dried, the 3" (75 mm) and 3 ½" (89 mm) adjustable angle heads (models AH30-AD and AH35-AD) are used in conjunction with the corner applicator (model CA08-AD) or the TapeTech MudRunner[®] to apply the finish coats over the internal corners.

The "adjustable" feature of these angle heads refers to the ability to control the amount of spring pressure by engaging or disengaging one set of tension springs on the back of the angle head. If both springs are engaged, the angle head leaves less joint compound in the corner. If only one spring is engaged, the angle head will leave more compound. You can adjust the springs equally, or differently, on the right and left sides of the angle head, depending on the conditions in the internal corner.

Fill the corner applicator or MudRunner with joint compound using the Loading Pump with the Filler Adapter. Attach the angle head to the ball-end of the corner applicator or MudRunner.

Corner Applicator: With the nose end of the angle head leading, start at the top of the vertical angle and apply pressure to the corner applicator to start the flow of compound. Move the tool along the corner with consistent pressure to continue applying joint compound. About 3 feet (1 m) from the floor, release the pressure on the corner applicator and sweep it away from the corner. Then, starting at the bottom of the corner, apply pressure and pull the tool up the corner. Release the pressure when you reach the compound left from the previous pass and sweep the corner applicator and corner finisher away from the corner. Ceiling corners are finished using the same methods. Detail wall and ceiling corner intersections with a drywall knife.

MudRunner: With the nose end of the angle head leading, start at one end of the joint. Twist the handle to start the flow of joint compound. Move the tool along the joint to apply joint compound and finish the internal corner. Detail wall and ceiling corner intersections with a drywall knife.



1327 Northbrook Parkway, Suite 400
Suwanee, GA 30024
1-800-426-6256 | 678-892-2323

Angle Heads

Operation and Maintenance Guide

Models: AH25-AD, AH30-AD & AH35-AD

Maintenance

Clean thoroughly after every use with a brush and water (or a water hose) to remove all joint compound from the tool. After the tool is clean, lightly oil with TapeTech® Bazooka® Oil.

Common Parts Kits

Kit #	Description
501F25A	2.5" Angle Head Maintenance Kit – AH25-AD
502F25	2.5" Angle Head Blade Change Kit – AH25-AD

Kit #	Description
501F4A	3" Angle Head Maintenance Kit – AH30-AD
502F4	3" Angle Head Blade Change Kit – AH30-AD

Kit #	Description
501F4AX	3.5" Angle Head Maintenance Kit – AH35-AD
502F4X	3.5" Angle Head Blade Change Kit – AH35-AD